

# NEO use manual



When operating this product, please read the manual of this instrument carefully

## preface

First of all, Thanks to the customers who have purchased our equipment. This manual is written for customers to use this instrument better. In order to use the instrument correctly, prevent damage to the operation and users, protect the instrument from damage, and avoid unnecessary property losses, Please read the instructions carefully before use.

The company considers that it shall be responsible for the safety and reliability of the instrument only under the following circumstances: the assembly operation, reassembly, improvement and maintenance shall be carried out by the personnel approved by the company, the electrical equipment connected to the instrument shall meet the national standards, and the instrument shall be used in accordance with the operation instructions.

This is a life beauty instrument. If the beauty institution using this device cannot operate the device in a formal manner, it may cause the failure of the function of the device and may endanger personal health. The company will provide a circuit diagram for a fee when the user requests it, and a list of calibration methods and other information will be provided to help the user to have a qualified technician to repair the part of the instrument that the company classifies as repairable by the user. This product must be used in strict accordance with the use methods in this manual. All consequences caused by misuse of methods other than the instructions shall be borne by himself, and the company shall not bear any responsibility. The company does not make any form of guarantee, including (but not limited to) the actual marketability and suitability guarantee for a specific purpose.

The company is not responsible for the errors contained in this information, or the occasional or indirect damages caused by the provision of this manual, actual performance and use. This user manual contains all the basic information of this instrument. This is the starting point for new users to start using this instrument, because it gives a basic introduction to the system, explains how it works, introduces the installation of this instrument and various operating methods, and you can find the information you need through the catalog.

This manual contains proprietary information protected by patent law. All rights was reserved. No part of this manual may be photographed, copied, copied or translated into other languages without the written consent of the company. The contents contained in the manual can be changed without notice to the user.

## Content

1. Principle .....	2
Operation taboos .....	3
1. 1 Safety precautions .....	3
1. 2 Operation precautions .....	3
2. Installation .....	4
2. 1 Component .....	5
Filling / drainage water .....	5
3. Operation process of instrument interface .....	7
3. 1 Starting interface .....	8
4. Maintenance and repair .....	10
5. Common troubleshooting methods .....	10
6. Responsibility of the manufacturer .....	11
7. Storage and transportation management .....	11
8. Warranty terms .....	11
9. Technical Parameters .....	11
10. Parts List .....	11

## 1.1 Principle:



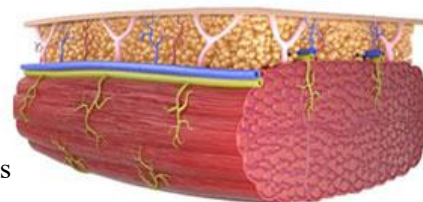
### RF Reducing fat -30%

Synchrode RF technology can release RF at the same time as the HIFEM high-frequency contraction signal, which heats the fat layer to 45 degrees, directly destroys the fat cell tissue, and makes it die naturally, while maintaining a comfortable temperature during the treatment. The destroyed fat cells will be excreted through the body, reducing the thickness of the fat layer and shaping the Fit & Firm line.



### HIFEM Built muscle - 25%

With the new HIFEM high-frequency contraction design, it penetrates into the muscle tissue and directly triggers motor neurons, which can cause the muscles to produce higher-frequency contractions within 30 minutes, and the effect of increasing muscle can be seen quickly. Beyond general exercise, 4 sessions are equivalent to 12-16 weeks of training. Together with Synchrode RFTM, it releases heat, improves blood circulation in the body, and stimulates muscle growth.



#### course of treatment:

The duration of one operation is 30 minutes for one part, and the maximum is no more than 60 minutes; 3 times a week, two weeks is a course of treatment. The best effect is 2-4 weeks after treatment. According to the course of treatment (4-6 courses), the treatment can last for 6 months.

## 1.2 Operation taboos

- 1、 It's forbidden for pregnant women, breastfeeding women, and menstruating women.
- 2、 Those who are close to menstruation should be cautious, which may cause early menstruation or abdominal cramps.
- 3、 It's forbidden for those position which implant metal or electronic equipment (pacemaker, defibrillator, neurostimulator, drug pump, etc.).
- 4、 It's forbidden for those with major diseases such as malignant tumors and cancer.
- 5、 It's forbidden for those with heart disease, arrhythmia, epilepsy, severe hypertension, and diabetes.
- 6、 It's forbidden for those who have artificial filling in the body.
- 7、 It's forbidden for those with major surgery patients, and it can also be used according to the recovery situation and after consulting the doctor.
- 8、 If there is a wound on the skin, avoid the wound or don't do it.
- 9、 Do not operate the abdomen when you are full, at least one hour after meals.
- 10、 Trying avoid ribs when using.
- 11、 Before use. the metal objects worn on the body must be removed. When using. avoid the

### 1.3 Safety precautions

- 1、 When the power plug is dirty, wipe it clean in time, and make sure that there are no foreign objects before connecting to the socket.
- 2、 It must be connected high-power supply socket with three plug at 220-230v,50Hz, and remove the power cord when moving the equipment.
- 3、 Don't touch the power plug and pull the power cord after plugging in.
- 4、 Do not touch the power cord and plug with wet hands.
- 5、 Do not force the instrument or the parts around the power supply.
- 6、 Do not use the instrument at high temperatures, and do not place heating equipment near the instrument.
- 7、 After the instrument is started, do not open the power socket of the instrument at will, which will cause failure.
- 8、 If there is smoke or odor when using the instrument, please unplug the power supply and consult after-sales service.
- 9、 Do not touch the lips and eyes when the handle is activated to avoid injury.

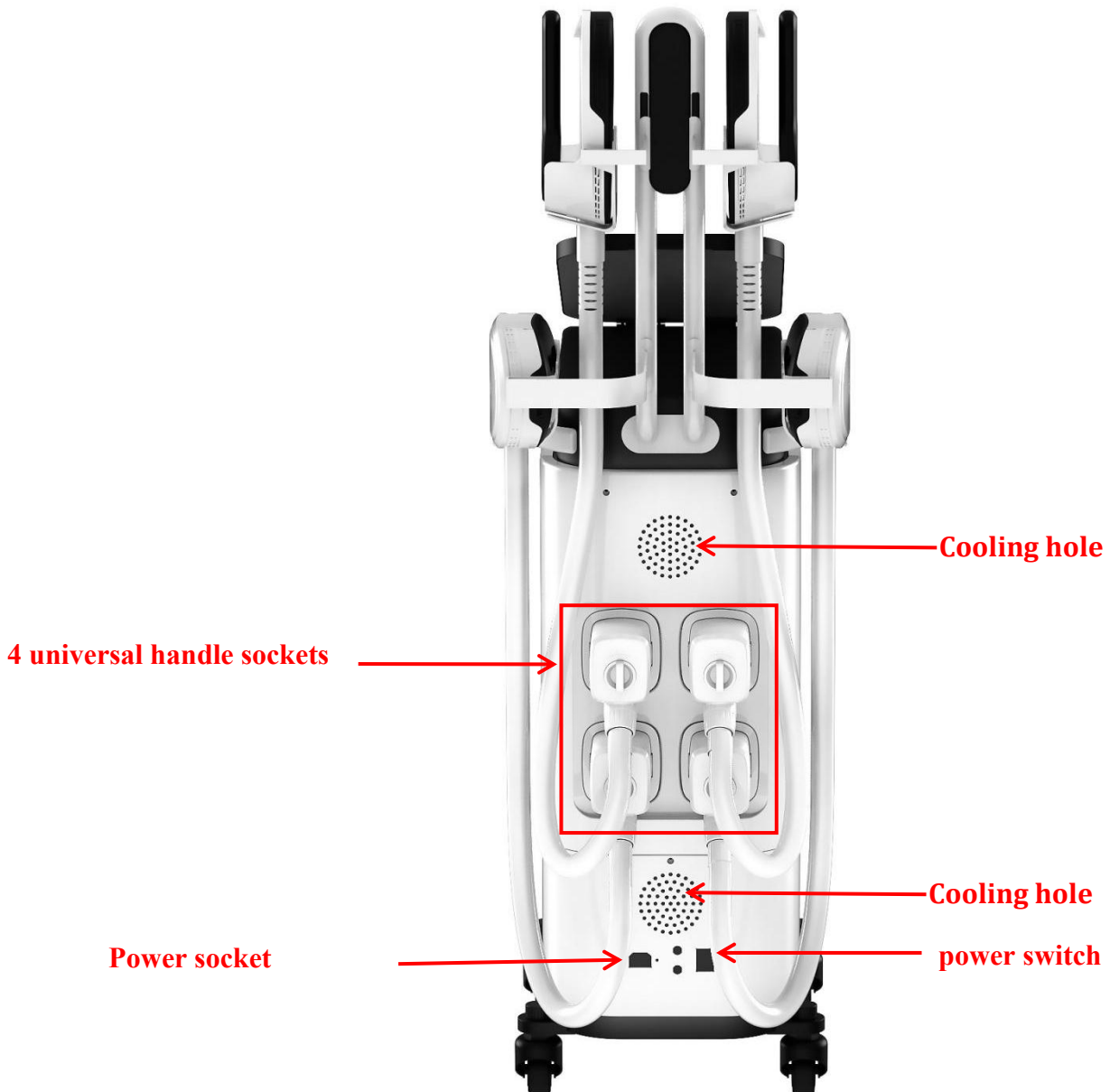
### 1.4 Operation precautions

- 1、 Please read the manual carefully, and then use it according to the method in the manual. When the instrument is not used for a long time, please unplug the power supply.
- 2、 The instrument must be used after consulting with experts or after professional training.
- 3、 When using hand tools, first turn down the intensity, and then gradually adjust to the applicable intensity.
- 4、 When the handle is not in use, it should be placed in the accessory rack to prevent it from falling; when the handle is in the accessory rack, do not pull the connecting line forcefully.
- 5、 After using it each time, you need to stand by for ten minutes before turning off the power.If you need to change the operator, please use it after 5 minutes. For the same manipulator, you need to wait for 5 minutes before using it again.
- 6、 If there is any abnormality on the patient when using the instrument, please stop the operation immediately and consult an expert.
- 7、 If the instrument is abnormal, please confirm the manual again before operation; if the abnormality is not removed, do not disassemble the instrument by yourself, and contact after-sales service for consultation.

## 2. Installation

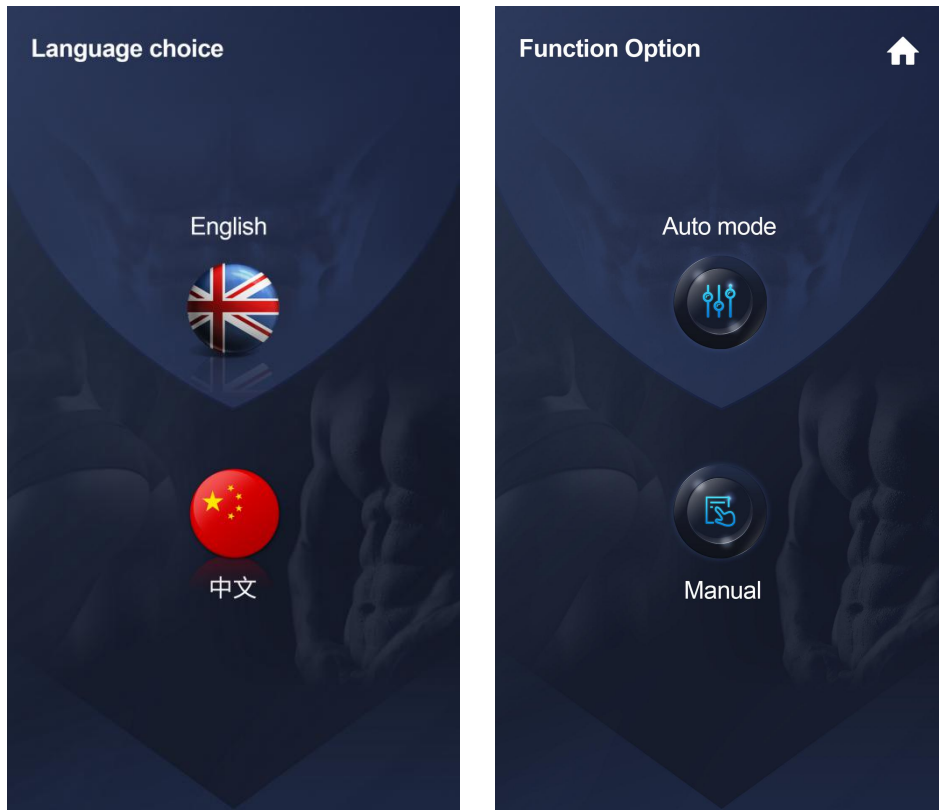
### 2.1 Component



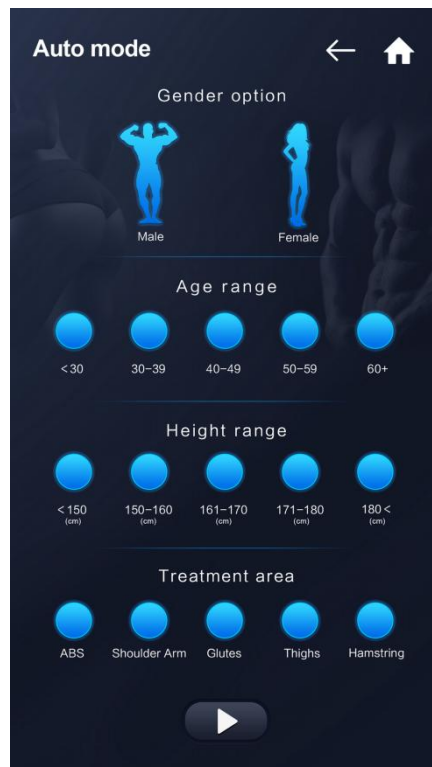


### 3. Operation process of instrument interface.

#### 3.1 Starting interface

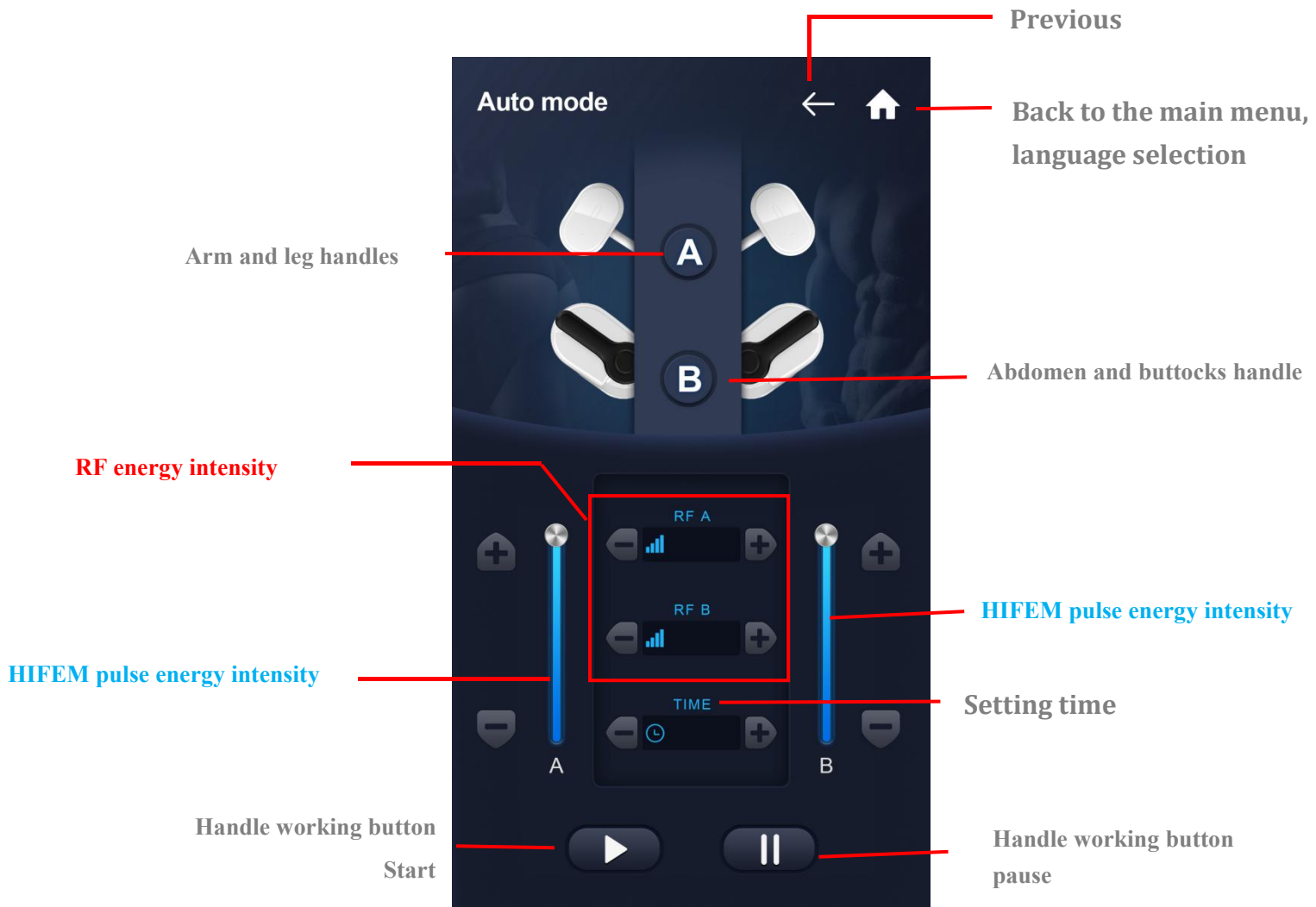


Note: 1. The automatic mode is as follows:



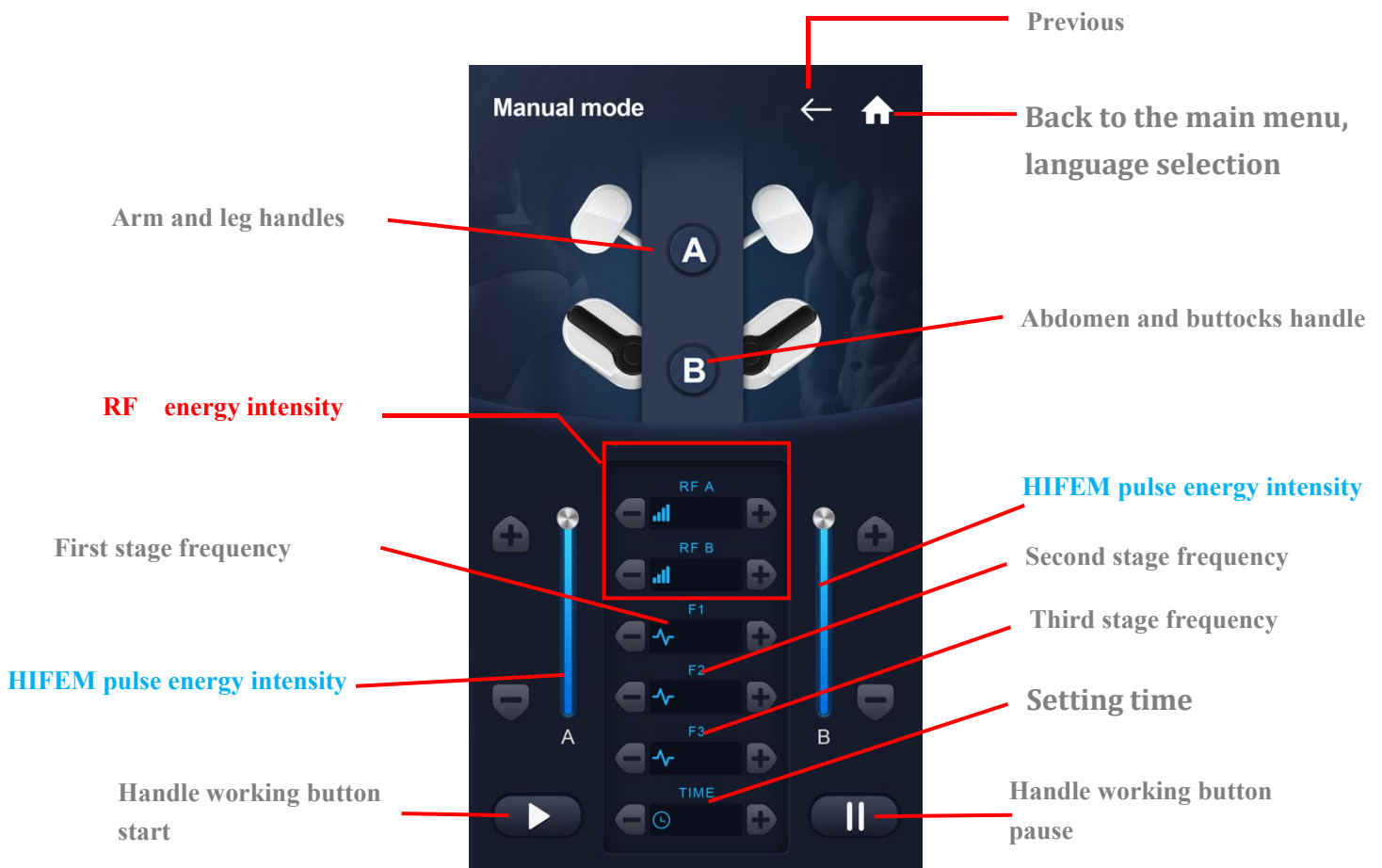
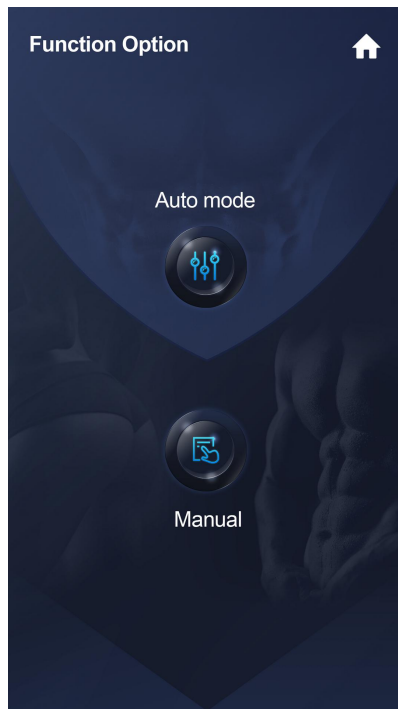
#### 2、 Choosing according to different gender, age and location





2、 The AB handle can be selected independently, the strength/time of the handle can be adjusted according to different customers, and the start/stop button can be clicked to operate

The manual mode as follows:



Note: 1 select the part to be operated:

2 adjust the intensity/frequency time.

3 align the handle with the operating part and tie it, then press the start button on the screen to start the operation

4. After use, clean the handle in time and place the handle gently on the handle rack.

## 4. Maintenance and repair

### 4.1 Maintenance

#### 4.1.1 Daily inspection

Managers must regularly inspect and control instruments and components.

Whether the power socket is reliably connected to the ground.

Before use, check whether the power cord of it is damaged, and stop using the instrument if it is damaged.

#### 4.1.2 Cleaning

Periodically cleaning the equipment to ensure the sanitation and good operation of it. You can wipe the outside of the device with a damp cloth when it's powered off, using soapy water or a neutral detergent.

#### 4.1.3 Fuse replacement

When replacing the fuse, in order to prevent electric shock, you must turn off the power and unplug the power plug.

### 4.2 Repair

After purchasing the machine, you need to keep the warranty card and send it to the manufacturer or agent to have the warranty effect. From the date of purchase (by receipt), the company's product quality is guaranteed for one year free of charge. (Warranty with the purchase receipt and

## 5. Common troubleshooting method.

Failure phenomenon	Causes	Exclusion and resolution
Equipment not working	The power plug is not inserted into the socket The power switch is not on Failure of power fuse	check power check the power switch replace the fuse
Handle not working	The working head has been damaged The interface on the back of it is not installed correctly	replace working head re install

## 6. Responsibility of the manufacturer

- The products we produced should meet the product standards. If there is any non-compliance, the company is responsible for replacement and return.
- In case of personal and property damage caused by product manufacturing defects, our company shall bear corresponding liabilities, but the company shall not be liable for the following situations;
- The purchaser and operating user do not use in accordance with the operating specifications of the manual, and do not use in accordance with the safety precautions and warning instructions.
- Violating product transportation, installation, use, maintenance, storage, etc., to cause product, personal, or property damage.
- The company implements life-long maintenance and technical services for the products. If the manufacturing quality problems occur within the specified warranty period, they will be repaired for users free of charge
- When accessories need to be replaced, original accessories must be purchased from our company, otherwise the adverse consequences will be borne by the user.

## 7. Storage and transportation management

**Storage:** The instrument should be stored in the original packaging box, placed in a well-ventilated room, the packaging box should be high, the ambient temperature is  $-10^{\circ}\text{C}\sim 40^{\circ}\text{C}$ , the relative humidity is not more than 93%, and it is not allowed to be placed in harmful gas. Surrounding flammable, explosive materials and corrosive gases.

**Transportation:** The instrument in the packaged condition is suitable for road, railway, aviation and waterway transportation. During loading and unloading and transportation, it should be protected from severe vibration and shock, and should not be exposed to moisture, and cannot be mixed with flammable and corrosive substances. The specific requirements are as specified in the order contract.

## 9. Warranty terms

The warranty period of this instrument is 1 year (Note: except for artificial damage)

The warranty period of accessories is 3 months (Note: except for artificial damage)

If the instruments beyond the service life are to be used continuously, they shall be tested and approved by the engineer, and the performance of it shall be tested regularly by the engineer in the subsequent use. The scrapped instruments and accessories exceeding the service life shall be disposed according to the relevant local regulations.

## 9. Technical Parameters

<b>Item</b>	<b>parameter</b>
<b>Power</b>	<b>100-240V50/60Hz</b>
<b>power consumption</b>	<b>2. 3KVA</b>
<b>screen size</b>	<b>15.6 inch</b>
<b>Output intensity</b>	<b>0-7Tesa</b>
<b>RF frequency</b>	<b>5M</b>
<b>pulse</b>	<b>300us (Microsecond)</b>
<b>Pulse shape</b>	<b>Biphasic wave</b>
<b>Instrument size</b>	<b>570*376*900 (mm)</b>
<b>weight</b>	<b>51.7kg</b>

## 10. Parts List

<b>No</b>	<b>parts</b>	<b>QTY</b>	<b>unit</b>
1	Host (qualified product)	1	pcs
2	power cord	1	pcs
3	Operating handle	4	pcs
4	Bandage (long, short)	1	set
5	warranty card	1	pcs
6	use manual	1	pcs